



CONSETT
ACADEMY
SIXTH FORM

SUBJECT INFORMATION

CONSETT ACADEMY



2024-25 OFFER

*For students studying
in 2024-25*



overview

WHO ARE WE?

Consett Sixth Form has a reputation for academic success at Advanced Level, in the range of subjects that we offer. We are also offering an expanding suite of Level-3 BTEC qualifications including the chance to join our Sport Academy where you could study, train and compete while being part of the Sixth Form.

We believe that education post-16 should be at forefront of teaching and learning practice but also the most important academic years in a young person's life as they take their first steps towards a career. It is a privilege to work with students at this stage in their education and it is not something we take for granted.

Our enrichment programme is an integral part of our Sixth Form offer. We encourage our students to Give Back as part of a range of volunteering opportunities that support our Academy and local communities. We also offer trips and events including geography field trips abroad, residential trips and bespoke rewards trips for Sixth Form students.

While part of Consett Academy and able to take advantage of our specialist facilities, we are extremely lucky to have designated areas for Sixth Form students. These are designed to support independent study and collaborative work alongside spaces for students to socialise.

The common room allows students to relax and socialise in a more adult environment than the rest of the building, this gives an excellent transition to a higher education or workplace environment. The study room which is exclusively for the Sixth Form, gives a professional environment allowing our students to take advantage of their study periods.

Post-16 education also comes at a very challenging time for young adults. With new freedoms and more independence comes the potential for a stressful environment with influences from social media and the demands of university and apprenticeship applications. We pride ourselves on our excellent pastoral care and we ensure that every one of our Sixth Form students receives the support, guidance and encouragement they need.

While the majority of our Sixth Form students choose to continue their education there is an increasing number who are choosing higher apprenticeships. Preparation for 'the next step' begins early in Year 12 where students are exposed to all of their options, with guidance from their tutors, teachers and the Sixth Form team. We also utilise outside speakers, university visits and an opportunity for work experience.

Consett Sixth Form is an inclusive Sixth Form and we pride ourselves in offering outstanding teaching, advice, support and guidance. We look forward to receiving your application.

Consett Academy Sixth Form has an excellent reputation for success. Students who join the Sixth Form enjoy access to a dedicated Sixth Form area and a team of tutors and teaching staff, who support and challenge them throughout their Sixth Form journey.

WHERE WILL YOU GO

Our students go to top universities in the country



MANCHESTER

Sport and Exercise Science

SALFORD

Film Studies

BIRMINGHAM

Ancient History

HARTPURY

Equine Science

BATH

Psychology

NEWCASTLE UNIVERSITY

Civil Engineering
Zoology
Politics
Computer Science

NORTHUMBRIA UNIVERSITY

English Literature	Biomedical Science
Geography and Environment	Professional Policing
Business and Marketing	English Language
Architecture	Chemistry
History	

DURHAM UNIVERSITY

Physics
Mathematics
Education
Psychology

YORK ST JOHN

Law

LEEDS

Physics with Astrophysics
Geography



BTEC LEVEL 3 MUSIC PERFORMANCE

COURSE INFORMATION

This course is for anyone who enjoys a high-level of involvement in Music. Over the two years students will encounter many opportunities to develop their performing skills, as well as being introduced to new music through performance, composition and listening work. Whether students play an instrument or are a vocalist, the A Level course gives students plenty of opportunity for self-expression. By studying different genres students will be able to increase their own sense of musicianship and musical understanding

SUBJECT ENTRY REQUIREMENTS

GCSE Music grade 6 or above.

- Minimum of Grade 5 (or equivalent) on their main instrument.
- Regularly attend instrumental lessons.
- Be involved with Extra Curricular Music activities

The course is assessed through a mixture of internal and externally assessed coursework and written exams.

WHAT WILL I STUDY?

BTEC Level 3 Extended Certificate Course Outline

For this specification learners must complete 3 mandatory units and select at least 1 optional unit.

UNIT 1: Practical Music Theory and Harmony

90 GLH Mandatory (internal)

Learners develop knowledge and understanding of music theory and harmony, and apply their understanding in practical scenarios.

UNIT 2: Professional Practice in the Music Industry

90 GLH Mandatory (external)

Learners explore what it is that makes someone a professional in the music industry and how to put forward a bid for work.

UNIT 3: Ensemble Music Performance

120 GLH Mandatory Synoptic (external)

Learners work as part of a musical ensemble and develop their skills and techniques in rehearsal and performance.

UNIT 6: Solo Performance

60 GLH Optional (internal)

Learners explore the preparation and performance of music as a soloist before performing in front of an audience

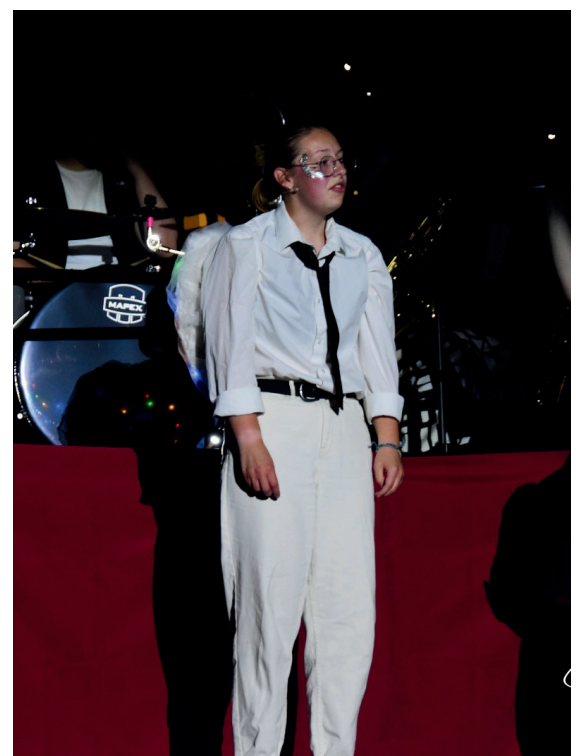
CONTACT

fjohnson@consettacademy.org.uk

WHERE COULD THIS COURSE TAKE ME?

Study Music at University or you can pursue a career as a:

- Composer
- Songwriter
- Producer
- Orchestrator & Arranger
- Session Musician
- Performer
- Conductor
- Music Therapist
- Classroom Teacher
- Instrumental Teacher
- Music Journalist
- Ethnomusicologist



A- LEVEL ENGLISH LANGUAGE

COURSE INFORMATION

At AS and A2 level, English Language gives students the opportunity to explore the underlying ways we communicate and make meaning in both spoken and written language. The course will allow students to explore – in a linguistic, grammatical and sociolinguistic way – the world in which we live and communicate. Students will also engage with the intellectual thoughts, ideas and views of linguistic theory. The study of Language also enables students to analyse the development of our language over time and to understand how we evolve from non-speaking infants to expressive adults – what one critic refers to as “the articulate mammal”. The course will develop the skills of close analysis, explore contextual influences, and develop explanations, independent ideas and arguments. It provides students with the opportunity to acquire many skills which will be of use to them in Higher Education, or indeed, all types or employment.

SUBJECT ENTRY REQUIREMENTS

You must show evidence of a good GCSE pass in English Language (grade 6 and above). Students need to have a hungry and enquiring mind, write in an academic style and develop their own voice. Language is a subject that rewards individuality of thought and your interpretation; an interest in writing as a future career is also an advantage. We need individual minds and active participants in an A Level English classroom.

An open and enquiring mind is essential!

WHAT WILL I STUDY?

Students will explore the ways in which contexts and identities affect language production and reception. They will also be asked to apply critical and creative skills in the production of texts.

Students will also cover modules in Child Language and Language Variation, as well as an investigation from a choice of five topics:

- Global English
- Language and Gender Identity
- Language and Journalism
- Language and Power
- Regional Language Variation.

CONTACT

p.creegan@ncdat.org.uk

WHERE COULD THIS COURSE TAKE ME?

If you do not wish to follow an academic path on completing your A Levels, Language can still be extremely useful as it requires you to become skilled at seeing life from different points of view and perspectives. If you are considering any of the following careers or related jobs, you should seriously consider this subject:

- social services
- publishing and advertising
- law
- journalism
- civil service
- counselling
- teaching (particularly with younger children at primary level)



A-LEVEL ENGLISH LITERATURE

CONTACT

p.creegan@ncdat.org.uk

WHERE COULD THIS COURSE TAKE ME?

If you do not wish to follow an academic path on completing your A Levels, Language can still be extremely useful as it requires you to become skilled at seeing life from different points of view and perspectives.

If you are considering any of the following careers or related jobs, you should seriously consider this subject:

- social services
- publishing and advertising
- law
- journalism
- civil service
- counselling
- teaching (particularly with younger children at primary level)

COURSE INFORMATION

English Literature at AS and A2 level gives students the opportunity to indulge their love of reading and explore the intellectual thoughts, ideas and views of some of the most inspiring and entertaining writers ever. The study of Literature also enables students to see what makes us tick as human beings, exploring “the human condition” whilst exploring other times, periods, cultures – even other worlds! The course will develop the skills of close analysis, explore contextual influences, develop explanations, independent ideas and arguments. It provides students with the opportunity to acquire many skills which will be of use to them in Higher Education, or indeed, all types of employment.

English Literature is a highly academic, prestigious subject; if you’re an intelligent and perceptive reader.

SUBJECT ENTRY REQUIREMENTS

You must show evidence of a good GCSE pass in English Language (grade 6 and above) and Literature (grade 6 and above). Candidates need to have a hungry and enquiring mind, enjoy reading, write in an academic style and develop their own voice.

Literature is a subject that rewards individuality of thought and your interpretation. You’ll need to express your thoughts and your opinions.

We need individual minds and active participants in an A Level English classroom.

An open and enquiring mind is essential!

WHAT WILL I STUDY?

There will be a range of texts studied within the course of A Level, for example;

- Modern Poetry Anthology (various)
- Frankenstein (Shelley)
- The Handmaid’s Tale (Atwood)
- A Streetcar Named Desire (Williams)
- Othello (Shakespeare)
- Romanticist Poetry (various)

Students will be asked to explore the ways in which writers communicate ideas in prose, plays and poems.

They will complete contexts affect interpretation as well as exploring different readings of texts.

Students also produce a comparative analysis of two contemporary poems.



A- LEVEL BUSINESS STUDIES

COURSE INFORMATION

A Level Business will captivate the imagination of students so that, beyond the classroom, they'll want to explore and read around the subject further.

While serving as an introduction to the study of Business, the specification will also provide opportunities for stretch and challenge, to extend students' understanding of the business world. The combination of academic challenge and practical focus makes the prospect of studying Business appealing to students across the ability range.

There are also many opportunities for trips including the Nissan Production Tour.

SUBJECT ENTRY REQUIREMENTS

There is no specific requirement for students to have a KS4 qualification in Business. Students do need to demonstrate a genuine interest in the world of business. Also some of the course content involves evaluating the financial performance of business, so being competent in both maths and statistics is an advantage.

WHAT WILL I STUDY?

Students will follow 4 themes throughout the 2 years of study. Theme 1 and 2 for AS Level and Theme 3 and 4 for A Level.

Theme 1: Marketing and people

Students will develop an understanding of:

- meeting customer needs
- the market
- marketing mix and strategy
- managing people
- entrepreneurs and leaders

Theme 3: Business decisions and strategy

This theme develops the concepts introduced in Theme 2. Students will develop an understanding of:

- business objectives and strategy
- business growth
- decision making techniques
- influences on business decisions
- assessing competitiveness
- managing change

Theme 2: Managing Business Activities

Students will develop an understanding of:

- raising finance
- financial planning
- managing finance
- resource management
- external influences

Theme 4: Global Business

This theme develops the concepts introduced in Theme 1. Students will develop an understanding of;

- globalisation
- global markets and business expansion
- global marketing
- global industries and companies (multinational corporations)

CONTACT

hrenshaw@consettacademy.org.uk

WHERE COULD THIS COURSE TAKE ME?

A Level Business is a universally recognised qualification that prepares students effectively for further study and/or employment in any Business related sector including:

- Business Management
- Accountancy and Financial Management
- Human Resource Management
- Operations Management
- Retail Management
- Marketing
- Sociology
- Law
- Politics and Business Ethics



A- LEVEL COMPUTING

COURSE INFORMATION

Computer Science is a practical subject where students can apply the academic principles learned in the classroom to real-world systems. It's an intensely creative subject that combines invention and excitement, and can look at the natural world through a digital prism. The aims of this qualification are to enable learners to develop:

- An understanding and ability to apply the fundamental principles and concepts of computer science, including: abstraction, decomposition, logic, algorithms and data representation
- The ability to analyse problems in computational terms through practical experience of solving such problems, including writing programs to do so
- The capacity to think creatively, innovatively, analytically, logically and critically
- The capacity to see relationships between different aspects of computer science
- Mathematical skills

SUBJECT ENTRY REQUIREMENTS

Students will be expected to have at least five good GCSEs at grades 5 or above, including English and Mathematics.

Having studied Computer Science at GCSE is desirable but not essential .

WHAT WILL I STUDY?

01 Computer systems - 2 hours and 30 minutes written paper 40% of A Level.

02 Algorithms and programming - 2 hours and 30 minutes written paper 40% of A Level.

03 Programming project Non Exam Assessment 20% of A Level.

CONTACT

HPearson@consettacademy.org.uk

WHERE COULD THIS COURSE TAKE ME?

Computing provides problem solving and time management skills appropriate to many areas. Any Computing related discipline or STEM related subject.



A- LEVEL GEOGRAPHY

COURSE INFORMATION

A Level in Geography aims to encourage students to develop a range of essential skills for Higher Education and the world of work through content which is relevant to any citizen of the planet in the 21st century. Through exciting topics students will understand the nature of physical and human geography whilst unpicking the debates surrounding contemporary challenges facing the world today

SUBJECT ENTRY REQUIREMENTS

In order to progress easily onto the A Level Geography curriculum students should have achieved GCSE Geography at Grade 6. You will also need to have a 5+ in Maths. You should have a curiosity about the world and an up to date knowledge about events and the world around you.

WHAT WILL I STUDY?

This course will excite students mind, challenge student's perceptions and stimulate investigative and analytical skills.

This course will reflect the World today looking at both physical and human aspects of geography. From exploring current landscapes and the systems/processes which operate within them along with issues surrounding them to engaging critically with real world issues and find out how these shape and change places and the impacts upon the people who live there.

Students will take part in debates which shape the world we live in and that are at the forefront of current affairs.

Students will also complete an independent investigation (comprising of 3000 words) on an aspect of Geography of their choice.

CONTACT

j.yates@ncdat.org.uk

WHERE COULD THIS COURSE TAKE ME?

An A Level in Geography gives you an academic qualification which universities and employers recognise. It provides a passport to further study. Jobs in;

- town and transport planning
- chartered surveying
- land and water management
- environmental consultancy
- development
- tourism, conservation
- demography
- housing and social welfare:
- many geographers choose careers in information technology, administration and management, the financial sector, and marketing.



A- LEVEL HISTORY

COURSE INFORMATION

A Level History is an engaging course of study which provides the opportunity to study the history of more than one country and the history of more than one period.

Students will investigate aspects of the past in breadth, through periods or themes, and in-depth. Significant individuals, societies, events, developments and issues will be explored in order to see connections, draw comparisons and form and support their own interpretation.

SUBJECT ENTRY REQUIREMENTS

In order to progress easily onto the A Level History curriculum GCSE Grade 6 or above in History is required.

WHAT WILL I STUDY?

Students will study 'Democracies in Change' with units on the transformation of Britain between 1918 and 1997, and an in depth study of the USA in the 20th Century.

In addition, students will also explore the Witch craze with a focus on case studies spanning from Europe to the USA from c1580-1750.

These units are assessed by three exams which include knowledge-based essays, source analysis questions and the analysis of historical interpretation.

A coursework enquiry of up to 4000 words is also completed. Students form a critical view based on relevant reading on the question, and analyse, explain and evaluate the interpretations of three main historians. The current coursework question is based on the rise of Arab Nationalism in the 20th century.

CONTACT

LMcAllister@consettacademy.org.uk

WHERE COULD THIS COURSE TAKE ME?

An A Level in History gives you an academic qualification which universities and employers value highly. It provides a passport to further study and jobs in a wide range of fields because of the excellent skills in analysis, evaluation, synthesis, and argument that it encourages students to develop.

Career areas that benefit from an A Level in History are;

- legal profession
- Policing
- The Civil Service
- Museum and archive services
- Politics
- Journalism



A- LEVEL RELIGIOUS STUDIES

PHILOSOPHY, ETHICS AND DEVELOPMENTS

COURSE INFORMATION

Religious Studies at A Level is an academically rigorous and challenging subject in which students think, debate, analyse and evaluate some of the biggest philosophical and ethical issues that have been discussed throughout human history; from the problem of evil, the mind-body problem to contemporary sexual ethics. It is good choice for anyone who has an enquiring mind, enjoys analysing situations and thinking critically. RS provides a firm foundation for skills needed in Higher Education and is a highly respected and sought-after qualification by universities and employers alike. RS students develop strong analytical and critical thinking skills, the ability to create logically sound and persuasive arguments...and of course...the ability to spot the flaws in weak arguments!

SUBJECT ENTRY REQUIREMENTS

In order to be successful in Religious Studies A Level you will need to have five 9 - 5 grades at GCSE with a 6 in English. You must also have an enquiring mind and be prepared to offer reasoned opinions and analyse a wide range of viewpoints and philosophical concepts. You do not need to have studied RS at GCSE.

WHAT WILL I STUDY?

The Religious Studies A Level is divided into three key areas:

Philosophy will focus on the big questions in life surrounding human existence, the mind-body problem, whether or not a god could exist, evil and suffering, and whether miracles can happen.

Ethics will look at the theories behind the decisions we make; such as whether we should follow rules or judge the consequences, and even what 'right' actually means! We will apply ethical theory to topics such as business ethics, sexual ethics and issues of life and death.

Developments in religious thought examines the theology surrounding the effectiveness of arguments about human nature and the afterlife, and radical interpretations including Liberation and Feminist Theology. We also explore secularisation and pluralism in contemporary society.

CONTACT

smcrobie@consettacademy.org.uk

WHERE COULD THIS COURSE TAKE ME?

The course will provide a firm foundation for any Higher Education course, equipping you with the skills necessary to effectively evaluate and analyse information.

RS is a highly respected qualification that is particularly sought after by universities for courses in Law, Medicine, Philosophy, Theology, History, Politics and Social Sciences. It also sought after by any career or profession which involves working with the public such as Police, Medicine, Journalism, Social Work, Education etc.



CONTACT*ppringle@consettacademy.org.uk***WHERE COULD THIS COURSE TAKE ME?**

The course will provide a firm foundation for any Higher Education course in Psychology but will also be useful for students intending to pursue careers in

- medical disciplines
- business
- social sciences
- education
- police
- law
- journalism
- sports and leisure.



A- LEVEL PSYCHOLOGY

COURSE INFORMATION

Psychology at A Level is an interesting and stimulating course suitable for a diverse range of students.

It is appropriate for anyone who has an enquiring mind, enjoys analysing situations and thinking critically.

The course gives students the opportunity to develop their interest and enjoyment of psychology, develop skills of analysis, evaluation and presentation.

Psychology provides a firm foundation for skills needed in Higher Education. It will offer opportunities for students to demonstrate the key skills of application of number, communication, working with others, and problem solving in particular.

SUBJECT ENTRY REQUIREMENTS

It is not necessary for students to have studied GCSE Psychology before starting this course. It is necessary for students to have achieved at least Grade 5 in GCSE English and Mathematics and have a good working knowledge of biological aspects of Science.

Students need to be able to organise and present information arguments and ideas clearly and logically.

WHAT WILL I STUDY?

Psychology is the scientific study of behaviour and experience. The course includes studying the main approaches in psychology and famous psychological studies. A key element of the course is studying the research methods used in psychological research.

Topics studied in Year 1 include:

- Psychological approaches and Research Methods
- Psychopathology
- Social Influence
- Memory
- Attachment
- Schizophrenia
- Issues & Debates
- Forensic Psychology
- Cognitive Development

A- LEVEL SOCIOLOGY

COURSE INFORMATION

Sociology at A-level is an interesting and stimulating course, which gives students an opportunity to demonstrate their knowledge and understanding of the subject; interpret various forms of material; analyse social issues and present explanations, ideas and arguments. It provides students with the opportunity to develop many skills which will be of use to them in Higher Education, or indeed, all types of employment. Sociology is an excellent subject to give breadth and balance to any combination of other A Level subjects.

SUBJECT ENTRY REQUIREMENTS

Academically speaking you are not expected to have completed any particular GCSE. However, you must show evidence of a good GCSE pass in English Language (grade 5 and above). Candidates need to be able to organise and present information, ideas and arguments clearly and logically.

An open and enquiring mind is essential!

WHAT WILL I STUDY?

Sociology is about social behaviour, why people behave as they do, what factors in society affect their behaviour, how groups of people in society organise themselves and come to be as they are. It is an attempt to study in as scientific and systematic way as possible, how society operates.

Topics studied in the course include:

- Education
- Culture & Identity
- Media, Crime & Deviance
- Sociological theory and Methods

CONTACT

ppringle@consettacademy.org.uk

WHERE COULD THIS COURSE TAKE ME?

Like any other A-level, a good pass in this subject will allow you to study most courses at university. However, if you are particularly interested in sociology, any natural science or criminology at degree level, this subject is a must for you.

If you do not wish to follow an academic path on completing your AS or A level, sociology can still be extremely useful.

If you are considering any of the following careers or related jobs, you should seriously consider this subject:

- Armed Forces
- Police
- Social Services
- Medicine
- Law
- Journalism
- Civil Service
- Leisure industry etc.



CONTACT*ppringle@consettacademy.org.uk*

BTEC LEVEL 3 EXTENDED CERTIFICATE CRIMINOLOGY

**WHERE COULD THIS COURSE
TAKE ME?**

Like any other Level 3 qualification, a good pass in this subject will allow you to study most courses at university. However, if you are particularly interested in sociology, psychology, criminology or any social science at degree level, this subject is a must for you.

If you do not wish to follow an academic path on completing your Level 3 Criminology can still be extremely useful. If you are considering any of the following careers or related jobs, you should seriously consider this subject:

- Police
- Social Services
- Law
- Mental health and care
- Medicine
- Civil Service
- Armed Forces
- Journalism

COURSE INFORMATION

Criminology at Level 3 is an exciting and interesting course, which gives students an opportunity to demonstrate and apply their understanding of the criminal justice system, including the police, courts, prosecution services, prisons and rehabilitation services. It allows students to consider how their learning impacts on themselves, other individuals, employers, society and the environment. Students will acquire and use a range of skills including analysing and understanding criminal themes, problem solving, applying knowledge to vocational contexts and transferable skills outside of learning environments. Criminology is an excellent subject to give breadth and balance to any combination of other A Level subjects.

SUBJECT ENTRY REQUIREMENTS

Academically speaking you are not expected to have completed any particular GCSE. However, you must show evidence of a good GCSE pass in English Language (grade 5 and above). Candidates need to be able to organise and present information, ideas and arguments clearly and logically.

An open and enquiring mind is essential!

WHAT WILL I STUDY?

Criminology is about understanding the criminal justice system and its impact on people and society.

This will include;

- understanding types and perceptions of crime
- theories of criminal behaviour
- the journey of crime from committing crime to sentencing of it and the use of punishment as social control.



CONTACT*ckester@consettacademy.org.uk***WHERE COULD THIS COURSE TAKE ME?**

The usual progression route is to go on to study a Foundation Course in Art, then on to a University Degree. A Level Art is a platform into careers such as;

- Animator
- Architect
- Computer Games Designer
- Community Arts Worker
- Fashion Designer
- Film/Video Maker
- Fine Artist
- Furniture Designer
- Graphic Designer

A- LEVEL ART AND DESIGN

COURSE INFORMATION

Students will be encouraged to follow their own lines of enquiry informed by cultural, contemporary and historical references. The multi-faceted nature of Art allows individuals to explore an array of processes such as drawing, painting, printmaking, photographic imagery, 3D construction, textiles and mixed media. It is fascinating and rewarding subject that allows you to use your imagination and creativity to produce exciting innovating pieces.

SUBJECT ENTRY REQUIREMENTS

You will need to have achieved a GCSE at grade 6 or above in English and Art before starting this challenging course and be able to demonstrate an aptitude and a keen interest in the subject.

WHAT WILL I STUDY?

Your work will be marked against the four Assessment Objectives

- Develop
- Experiment
- Record
- Present

60% of the course (Component 1) is a personal Investigation. This is a practical portfolio of work supported by written material.

Component 2 is an externally set assignment culminating in a 15-hour practical examination.



A- LEVEL BIOLOGY

COURSE INFORMATION

Biology is everywhere... It is the study of living organisms, life on Earth, why it exists, how it exists and how it all works from the smallest molecule to the largest organisms known to exist. You'll study a wide range of biological fields including some things you've already come across like the heart and lungs, but also how your brain works and how you even have thoughts. Biology is everything from anatomy and physiology, biochemistry, ecology, evolution all the way to genetics.

WHAT WILL I STUDY?

The specification is divided into topics, each covering different key concepts of biology, including: foundations in biology; exchange and transport; biodiversity; evolution and disease; communication; homeostasis; energy and genetics evolution and ecosystems. Teaching of practical skills is integrated with the theoretical topics and they are assessed through the written papers. The Practical Endorsement will also support the development of practical skills



CONTACT

EBohill@consettacademy.org.uk

SUBJECT ENTRY REQUIREMENTS

In order to study A-level Biology you will need to have achieved a Grade 6 or above at GCSE in Science and be able to demonstrate an aptitude and a keen interest in the subject. Therefore, the minimum requirement is two grade 4s from GCSE Science and a grade 4 in GCSE Maths

WHERE COULD THIS COURSE TAKE ME?

Success in Biology is such a powerful qualification to have on your university application or CV. It can take you down so many different paths we would struggle to fit them on this page. Biology A Level can open the door to numerous educational and career pathways, with many not in the Biological Sciences. Degrees in Biological subjects include Genetics, Biochemistry, Molecular Biology, Microbiology, Medicine, Dentistry, Pharmaceuticals and many others. Careers vary from Researchers, Doctors and Physiotherapists to Environmental Engineers. Other avenues include Law, Media, Management, Administration, Education, Accountancy, IT and Agriculture

A- LEVEL CHEMISTRY

CONTACT

SLevitt@consettacademy.org.uk

WHERE COULD THIS COURSE TAKE ME?

Chemical scientists are developing solutions to society's biggest challenges. You could help develop a life-saving vaccine. Or invent a new way to cut air pollution. Or create a new type of biodegradable plastic. A qualification in chemistry opens doors to a wide range of careers and education pathways.

COURSE INFORMATION

Chemistry is the study of matter and chemical change. As the central science there are many links to Biology and Physics. Chemists are the key to finding solutions to the problems of today and the future! Chemistry is a fascinating and engaging subject.

A day as a Chemist is never the same. One day you may be surrounded by practical equipment analysing the content of some medicines or even creating your own Aspirin. Other days you might be carrying out calculations, writing equations or drawing the structure of the molecules that make up your DNA. Regardless – Chemistry at Consett will always be interesting and challenging, with real world links to real world challenges or new developments in science so that you can see the good that Chemists can do!

SUBJECT ENTRY REQUIREMENTS

In order to study A-level chemistry you will need to have achieved a grade 6 or above at GCSE in Science and be able to demonstrate an aptitude and a keen interest in the subject.

WHAT WILL I STUDY?

The specification is divided into topics, each covering different key concepts of Chemistry. Teaching of practical skills is integrated with the theoretical topics and they're assessed both through written papers and the Practical Endorsement.

The specification is divided into chemical topics, each containing different key concepts of Chemistry.



A-LEVEL PHYSICS

COURSE INFORMATION

A-level Physics is the study of the world around us, from the light we use to see things to the forces keeping our atoms together! At A-Level we build on the ideas met at GCSE and start to really understand what is going on.

In the first year of the course, you will develop the maths skills you need. Maths is the language we use to explain observed phenomena. We will look at Newton's Laws of motion in real world contexts. Energy is a key topic in Physics so we will reinforce the ideas met at GCSE and apply them. Electrical circuits and material properties both have lots of practical work in. In fact, the whole course is geared around learning Physics by doing Physics. You will get a practical skills endorsement along with your final grade to show how much you have done and how good you have become at practical work. We finish the year delving into the mysterious world of Quantum Physics, explaining how light and electrons display both wave-like and particle-like properties!

SUBJECT ENTRY REQUIREMENTS

In order to study A-level physics you will need to have achieved a Grade 6 or above at GCSE in Science and be able to demonstrate an aptitude and a keen interest in the subject

WHAT WILL I STUDY?

The specification is divided into topics, each covering different key concepts of physics. As learners progress through the course, they will build on their knowledge of the laws of Physics, applying their understanding to solve problems on topics ranging from sub-atomic particles to the entire universe. The Practical Endorsement will also support the development of practical skills.

CONTACT

EBohill@consettacademy.org.uk

WHERE COULD THIS COURSE TAKE ME?

Physicists are problem solvers. They think clearly, plan carefully, work collaboratively, question everything and deepen their understanding of the world around them. This is what you will become. Those skills will make you into the type of person who can go on to many different areas and who will be very employable. It is the building block towards degrees in medicine, engineering and other STEM subjects, it's your passport to an exciting future – and what's more, you'll be rewarded handsomely when you get there.



CONTACT*TRedhead@consettacademy.org.uk***WHERE COULD THIS COURSE TAKE ME?**

Studying Core Maths will help you to develop your quantitative and problem-solving skills. This is valuable preparation for the quantitative skills you will need for many degree courses, particularly subjects such as geography, psychology, business-related courses, sports and social sciences, and natural science courses that do not require AS/A Level Mathematics. You will also find that studying Core Maths will help with the mathematical aspects of these courses at A Level if you are studying any of these subjects but not A Level Maths.

A- LEVEL CORE MATHEMATICS

COURSE INFORMATION

Core Maths is an umbrella term to describe a number of qualifications offered by various awarding bodies. The qualifications are equal in size and carry the same UCAS tariff points as an AS Level qualification.

At Consett Academy we follow the AQA Level 3 Certificate in Mathematical Studies course with the statistical techniques option

SUBJECT ENTRY REQUIREMENTS

GCSE mathematics grade 4 or above

WHAT WILL I STUDY?

You will look at applying the mathematical skills you already have and applying modelling and estimation techniques to solve a number of real life problems. You will also study financial maths and statistics.

The way Core Maths is taught, is very different to GCSE maths with all new learning centred around engaging students in real life problems to be solved.

The course is examined with 2 exams at the end of the course, where preliminary material will be made available to students and teachers about 3 months before the exams. This allows the materials to be utilised in class with teachers and the students will have time to familiarise themselves with it.



A- LEVEL FURTHER MATHEMATICS

COURSE INFORMATION

A-level Further Mathematics is studied alongside A-Level Mathematics and provides deeper understanding of Mathematical knowledge and skills. It is most suited to students that enjoy the challenges of Maths and for those that plan to study Computing, Technology, Scientific, Engineering or Mathematical subjects at University.

SUBJECT ENTRY REQUIREMENTS

GCSE Mathematics with a grade 8. You must be studying A-Level Maths.

WHAT WILL I STUDY?

The work covered in Further Mathematics will build directly on the Core topics that are studied in A-level Mathematics as well as introducing some new concepts, including complex numbers and matrices. Further Mathematics will also provide the opportunity to study the application of Mathematics in more detail. The areas of Mechanics and Statistics will be covered. The course will be assessed by four external exams at the end of Year 13.

CONTACT

TRedhead@consettacademy.org.uk

WHERE COULD THIS COURSE TAKE ME?

Further Mathematics is one of the most highly respected subjects offered at A-Level, its challenging content recognised by the top Universities.

It is a desired pre-requisite for many STEM and Mathematical subjects at Universities.



CONTACTTRedhead@consettacademy.org.uk**WHERE COULD THIS COURSE TAKE ME?**

A level Mathematics is well regarded by both employers and universities. It is an essential prerequisite for many courses including:

- Mathematics
- Engineering courses
- Physics
- Computing
- Business and Financial courses.



A- LEVEL MATHEMATICS

COURSE INFORMATION

The A Level Mathematics course consists of pure mathematics, mechanics and statistics. Pure mathematics content makes up two thirds of the course and the remaining third of the course consists of applied maths and is split evenly between mechanics and statistics.

It provides a thorough grounding in the mathematical tools and techniques often need in the workplace and at University.

SUBJECT ENTRY REQUIREMENTS

GCSE Mathematics with at least a grade 7.

WHAT WILL I STUDY?

Pure Mathematics builds upon topics already studied: algebra, trigonometry, coordinate geometry and graphs. It also includes the fundamental mathematics of calculus.

Mechanics is the study of objects, their motion and the forces acting upon them. The course investigates friction, projectiles and the effects on objects in a collision. Statistics extends GCSE topics such as the correlation between two variables as represented on a scatter graph; here the relationship is analysed in quantitative terms. The study of chance and probability is enhanced. A study of the normal distribution is also part of this unit. The ability to analyse data in real life contexts is extremely valuable in a number of other subject areas.

BTEC EXTENDED CERTIFICATE SPORT

COURSE INFORMATION

This qualification is designed to support progression into the Health, Fitness and Wellbeing sector as well as preparing students for higher education as part of a programme of study that includes other appropriate BTEC Nationals or A Levels. The multi-faceted nature of Sport is covered in this vocational course, including aspects of Anatomy & Physiology, Fitness training and Programming, professional Development in the Sports Industry and Sports Leadership.

SUBJECT ENTRY REQUIREMENTS

Level 5 or above in GCSE PE or Level 2 Merit or above in BTEC Sport or NCFE Health and Fitness

WHAT WILL I STUDY?

Students will cover 360 hours of guided learning equivalent to one A Level. Students will complete 4 units, 3 of which are mandatory and 2 being externally assessed. Mandatory Units:

- Unit 1: Anatomy & Physiology [External exam]
- Unit 2: Fitness Training & programming for Health, Sport & Wellbeing [External exam]
- Unit 3: Professional Development in the Sports Industry [Internal]

Optional Unit:

- Unit 4: Sports Leadership [Internal]

CONTACT

jpye@consettacademy.org.uk

WHERE COULD THIS COURSE TAKE ME?

The usual progression route is to go on to study a degree or foundation degree in any sport related discipline. Equally students may progress on to an apprenticeship or into employment in the health, sport and fitness sector. This course is a suitable platform into careers such as personal training, fitness professional, teaching, coaching, physiotherapy, sports therapy, nutrition, sports psychology or sports development officer to name a few.



CONTACT

jpye@consettacademy.org.uk

BTEC LEVEL 3 NATIONAL EXTENDED DIPLOMA SPORT

SUBJECT ENTRY REQUIREMENTS

Level 5 or above in GCSE PE or Level 2 Merit or above in BTEC Sport or NCFE Health and Fitness

WHAT WILL I STUDY?

The course covers a range of units, some of which include:

- Anatomy and Physiology
- Fitness Training and Programming for Health, Sport and Well-being
- Professional Development in the Sports Industry
- Sports Leadership
- Application of Fitness Testing
- Sports Psychology
- Practical Sports Performance

14 units of which 10 are mandatory and 4 are external. Mandatory content (78%). External assessment (42%).

Sport/football academy:

We are delighted to welcome Kieran from KG Coaching as our head coach.

- The football academy involves timetabled football training, gym sessions and entering sixth form leagues.
- The sport academy involves extra opportunities such as coaching courses, refereeing courses, strength and conditioning, first aid etc.
- This course would enable students to progress on to careers such as; sports coach, physiotherapist, PE teacher, nutritionist etc.

WHERE COULD THIS COURSE TAKE ME?

The usual progression route is to go on to study a degree or foundation degree in any sport related discipline. Equally students may progress on to an apprenticeship or into employment in the health, sport and fitness sector. This course is a suitable platform into careers such as personal training, fitness professional, teaching, coaching, physiotherapy, sports therapy, nutrition, sports psychology or sports development officer to name a few.



CONSETT
ACADEMY
SIXTH FORM



Consett Sixth Form Football Academy

Alongside studies, students take part in training sessions three times per week and play matches in the Durham League.

Specialist Coaching

Fitness

Skill Progression

Tactics

“I really enjoy the training here, there’s a really good atmosphere, we’ve got a great coach and it’s a nice break alongside our studies”

BTEC LEVEL 3 EXTENDED CERTIFICATE INFORMATION TECHNOLOGY

CONTACT

HPearson@consettacadmy.org.uk

WHERE COULD THIS COURSE TAKE ME?

This course will give you the skills, knowledge and understanding to support many careers and future studies that rely on the use of IT systems and technology. Plus being able to adapt systems to your own needs.



COURSE INFORMATION

This qualification is designed for learners who are interested in an introduction to the study of creating Information Technology systems. To manage and share information, alongside other fields of study, with a view to progressing to a wide range of higher education courses, not necessarily in IT. It allows you to explore both the technical and creative side of IT in areas such as social media, website development and networking.

SUBJECT ENTRY REQUIREMENTS

There are no specific course requirements. Just an interest in IT and how we use technology.

This course is for students who enjoy creating solutions however not the technical level of knowledge required for computing.

WHAT WILL I STUDY?

- Information Technology Systems – External Exam
- Creating Systems to Manage Information – External Practical Task
- Using Social Media in Business – Internally Assessed
- Website Development – Internally Assessed

CONTACT*dhitcham@consettacademy.org.uk*

BTEC EXTENDED CERTIFICATE HEALTH & SOCIAL CARE

WHERE COULD THIS COURSE TAKE ME?

This course is widely accepted as an entrance qualification to study health related course and jobs within the health and social care sector. Those in care, education, health, nursing, children's care or social work.

COURSE INFORMATION

A broad basis of study for the health and social care sector. This qualification is designed to support progression to higher education when taken as part of a programme of study that includes other appropriate BTEC Nationals or A Levels.

SUBJECT ENTRY REQUIREMENTS

- 5 GCSEs at good grades
- BTEC qualification(s) at Level 2
- Achievement in English and Mathematics through GCSE or Functional Skills.

WHAT WILL I STUDY?

The content of the qualification incorporates topics relevant across the health and social care sector:

- Human Lifespan Development
- Working in Health and Social Care
- Meeting Individual Care and Support Needs.
- Physiological Disorders and their Care.

The course is assessed through a combination of internal and external coursework and examination



BTEC EXTENDED CERTIFICATE HUMAN BIOLOGY

COURSE INFORMATION

The applied science industry offers huge potential for learners interested in the sector. The UK is currently regarded as a world leader in sectors including the medical profession, lab technicians, PE or primary education. Applied Human biology gives a well-rounded qualification in a science which is widely accepted by many universities.

SUBJECT ENTRY REQUIREMENTS

Applied Human Biology is not an “easy option” among the science subjects, but an exacting, technical course, which does require some mathematical ability and a great deal more independent work than the other sciences. Therefore, the minimum requirement is two grade 4s from GCSE Science and a grade 4 in GCSE Maths

WHAT WILL I STUDY?

Unlike the other A level science courses, the content and practical work is not solely assessed separately during the Applied Human Biology course, but is a continuous part of the portfolio and external assessments, including practical techniques.

The course has three mandatory topics which are externally assessed and one which is portfolio work. There is then one optional topic which will be decided by the course leaders for Year 13.

Unit 1 is a 1 hour and 30 minutes exam based on principles of human biology such as how the human body functions at a genetic, cellular and tissue level. The unit is split in to 4 assessment objectives;

- AO1 Demonstrate knowledge of human biology, health and disease facts, terms, definitions
- AO2 Demonstrate understanding of human biology, health and disease concepts, procedures, processes and techniques and their application
- AO3 Analyse, interpret and evaluate information and data relating to human biology, health and disease to make judgements and reach conclusions
- AO4 Make connections, use and integrate different areas of knowledge and understanding of human biology, health and disease concepts, procedures, processes or techniques

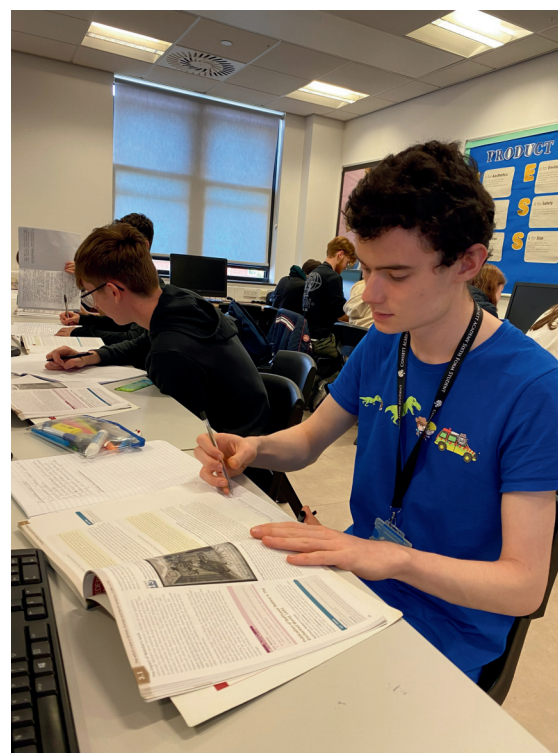
CONTACT

EBohill@consettacademy.org.uk

WHERE COULD THIS COURSE TAKE ME?

This course can be a gateway to university and to pursue a career in -

- Midwifery
- Adult Nursing
- Mental Health Nursing
- Pediatric Nursing
- Occupational Health
- Paramedic
- Lab Technician
- Sports Psychologist
- Microbiologist



BTEC EXTENDED CERTIFICATE TRAVEL & TOURISM

COURSE INFORMATION

An introduction to the study of the travel and tourism sector supporting progression to further or higher education and, ultimately, employment.

SUBJECT ENTRY REQUIREMENTS

Grade 4 in English and Maths

WHAT WILL I STUDY?

This qualification includes three mandatory units covering the following content areas.

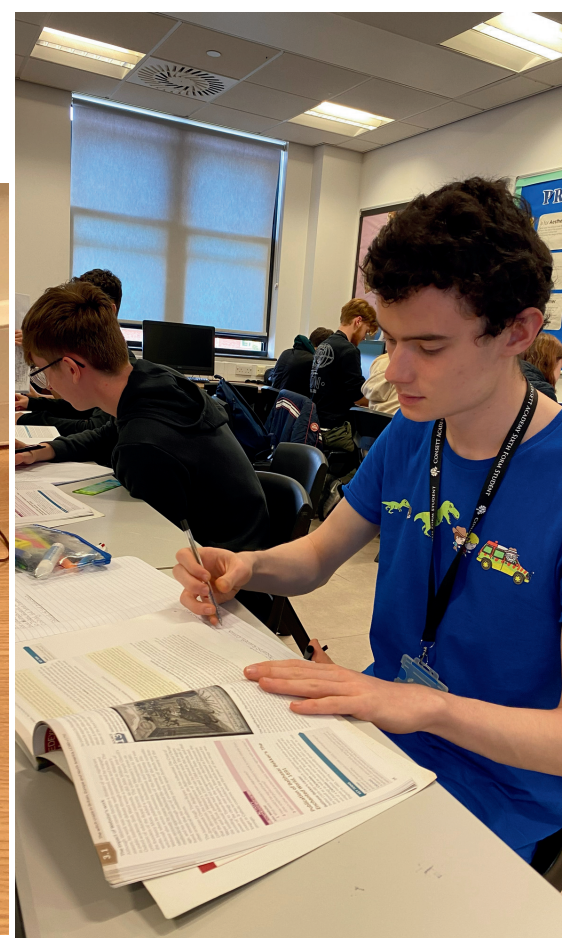
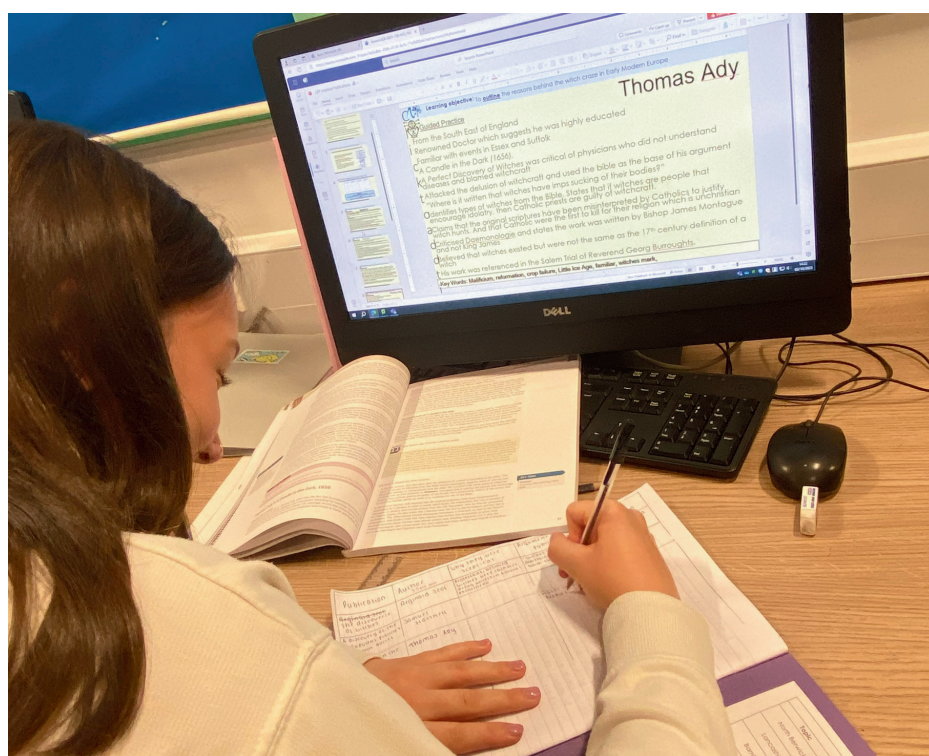
- The travel and tourism industry – the travel and tourism industry in the UK is growing and is of major importance to the economy. Learners will develop the skills needed to examine, interpret and analyse a variety of statistics that measure the importance of tourism to the UK.
- Different types of destinations and their importance – learners will investigate the features and appeal of global destinations.
- Principles of marketing in travel and tourism – learners will explore how to develop a successful marketing plan for use by travel and tourism organisations to attract and engage with customers using research data.

CONTACT

NElsender@consettacademy.org.uk

WHERE COULD THIS COURSE TAKE ME?

The qualification will mean that learners develop transferable skills, which are highly regarded by higher education providers and employers. The qualification will give learners transferable knowledge, understanding and broad skills such as communicating and presenting ideas. All of the content in the qualification will help prepare learners for further study. The qualification carries UCAS points and is recognised by higher education providers as contributing to meeting admission requirements for many courses,





CONSETT
ACADEMY

SIXTH FORM

Contact c.veide@ncdat.org.uk
for more information