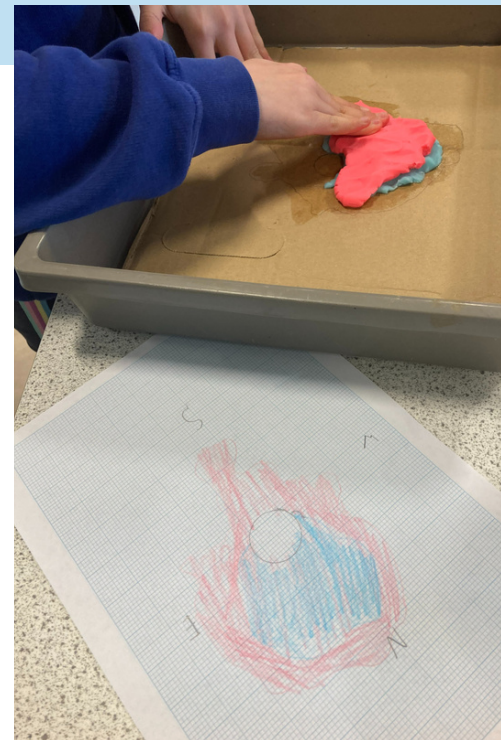


This week we welcomed parents and carers to our Year 8 parents' evening. It is always a pleasure to invite our parents and carers into the Academy to meet their child's teachers and discuss how their learning is progressing. We collected feedback from everyone that attended and, as a result, we have included some key information for you at the end of this week's newsletter, which we think you'll find useful.



Earlier this week, students from Leadgate and Shotley Bridge Primary schools enjoyed a practical STEM workshop learning about volcanoes and creating their own volcanic eruptions; they mapped out the eruption patterns using playdough and extracted core samples of 'volcanic rock' to observe the layers, mimicking what Volcanologists do in the real world to understand the history and geology of surrounding landscapes.

Year 13 and Year 11 have had yet another productive week, making the most of the revision sessions available to them. It's easy to forget that for many students, exams are already underway; many students have already completed their vocational courses giving them the time to focus on other subjects. A-Level and GCSE Art exams took place this week and the Year 11 practical dance exam was this morning. Our Year 10 and Year 12 students are also well on their way to completing the coursework required for their vocational courses. Year 10 music students have been performing for their practical assessment marks. Well done, everyone - we know the students could not be so well prepared without the support from home so a huge shout-out to all of our parents and carers for encouraging your students at home.



Before Easter, we reported that the U15 girls football team were through to the next round of the National Cup. Last week, they beat Newcastle Royal Grammar School 6 - 0, meaning they are now in the last 16 of the ESFA Girls Under 15 Schools' Cup for New Teams. To have achieved this in such a short timeframe is a fantastic achievement. For the next round, later in May, the team have been drawn away to Prince Henry's Grammar School in Otley, Leeds. We can't wait to report back on how the team get on!

This half term, we have adapted our Beyond 25 offer, based on feedback from the students. There are a full range of enrichment activities after school, including: Arts Award, Swim Club, Dungeons and Dragons, Gymnastics, tennis, Y7 Beamish Club, VEX Robotics, Dance, Board Games, Creative Writing, Enterprise, School Food Champions, Pride Youth Network. Finally, don't forget that every night homework club is available to all students.

Monday

Centre Stage - G.83



Tuesday

(Every two weeks) Arts Award Club - G.82
 Grease Prop Making Club - G.11
 Swim Club - G.83 (Sign up with Mrs Collins in Science)
 French Y10 GER - 1.19
 DND Club - Library
 Centre Stage -Band Rehearsal - G.83
 Band Jam (Y10 Only) - G.82
 Homework Club - 2.65
 Gymnastics Club - Sports Hall



Wednesday

Tennis Club - Tennis Courts
 Homework Club - 2.65
 Enterprise Club - Library
 Y7 Beamish Club - 2.59
 (Every two weeks) Young Historian - 1.05
 VEX VRC - G.12
 Centre Stage (cast members only) - G.83
 Dance Club - Dance studio



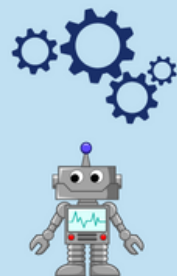
Thursday

(Every two weeks) Board Games Club - Library
 (Every two weeks) Creative Writing Club - Library
 DMS Windband (DMS students only) - Main Hall
 Sixth Form Maths Drop In (Year 12 & 13) - 2.22
 Spanish Y10 GER - 1.48
 DMS Consett Rocks - G.77
 Homework Club - 2.65



Friday

SchoolFood Champions - G.37
 Pride Youth Network - 1.49
 Homework Club - 2.65



Useful Academy information:

What your child is learning

In the curriculum section of our website, you can find guidance on what every student at the school is studying. If you require any further information regarding subject curriculums, please contact the Head of Department.

Contacting Staff

If you would like to contact staff at the Academy, see the list below of key staff as a first point of contact.

Tom Urwin Principal	T.Urwin@ncdat.org.uk	
Stuart Aldridge Deputy Principal	S.Aldridge@ncdat.org.uk	Quality of Education
Louise Crawford Deputy Principal	L.Crawford@ncdat.org.uk	Achievement
Ian Middleton Deputy Principal	I.Middleton@ncdat.org.uk	Behaviour and Attitudes
David Hall Assistant Principal	dhall@consettacademy.org.uk	Behaviour and Attitudes
Paul Owen Assistant Principal	P.Owen@ncdat.org.uk	Sixth Form
Catriona Veide Assistant Principal	c.veide@ncdat.org.uk	Personal Development
Aaron White Assistant Principal	awhite@consettacademy.org.uk	Staffing, Curriculum and Attendance
Kathleen Clarke Head of Student Support	kclarke@consettacademy.org.uk	Safeguarding
Jo Yates Associate Assistant Principal	jyates@ncdat.org.uk	Early Careers Teachers
Jonelle Pye Associate Assistant Principal	jpye@consetacademy.org.uk	Cultural Capital
Lucy Brierley	L.Brierley@consettacademy.org.uk	SENDCo

Pastoral Team

Paul Woodhouse Head of Year 7 pwoodhouse@consettacademy.org.uk

Lee Whitfield Year Manager Y7 lwhitfield@consettacademy.org.uk

Paul Howell Head of Year 8 phowell@consettacademy.org.uk

Kate Wynn Year Manager Y8 kwynn@consettacademy.org.uk

Phil Dodd Head of Year 9 pdodd@consettacademy.org.uk

Mel Parker Year Manager Y9 mparker@consettacademy.org.uk

Neil Elsander Head of Year 10 nelsender@consettacademy.org.uk

David Hopper Year Manager Y10 dhopper@consettacademy.org.uk

Kay Robb Head of Year 11 KRobb@consettacademy.org.uk

Karen Moncur Year Manager Y11 kmoncur@consettacademy.org.uk

David Wheelhouse Education Welfare officer

dwheelhouse@consettacademy.org.uk

Heads of Department

Art Catherine Kester CKester@consettacademy.org.uk

Aspire Ruth Allan rallan@consettacademy.org.uk

Computing, Media & Business Hannah Renshaw
hrenshaw@consettacademy.org.uk

English Paul Creegan p.creegan@ncdat.org.uk

Geography Jo Yates jyates@ncdat.org.uk

Health & Social Care Donna Hitcham DHitcham@consettacademy.org.uk

History Stuart Aldridge S.Aldridge@ncdat.org.uk

Information Technology Helen Pearson HPearson@consettacademy.org.uk

Maths Janine Smith jsmith@consettacademy.org.uk

MFL Sue Eastwood seastwood@consettacademy.org.uk

Music Fiona Dodd fjohnson@consettacademy.org.uk

PE Jonelle Pye jpye@consettacademy.org.uk

Philosophy & Religion Sally McRobie smcrobie@consettacademy.org.uk

Psychology & Sociology Paula Pringle ppringle@consettacademy.org.uk

Science Rachael Wilkinson R.Wilkinson@ncdat.org.uk

Technology Stephanie Hammett shammett@consettacademy.org.uk

Travel & Tourism Donna Hitcham DHitcham@consettacademy.org.uk